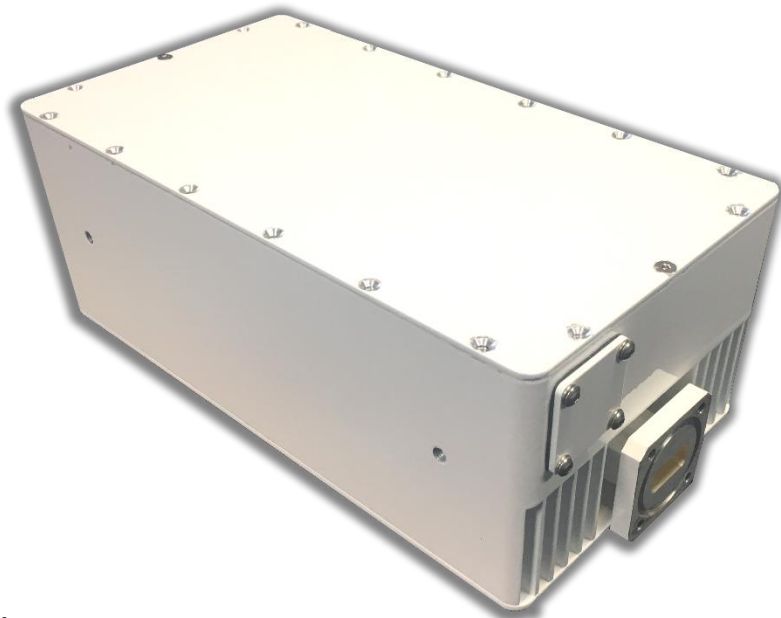


8 - 25 W Sub-Compact Ku-BAND BUC

DATASHEET

ALGA LOW COST COMPACT KU-BAND BUC

The Alga low cost Compact Ku-band BUC is built for VSAT stabilized platforms and mobile stations, while also offering benefits for fixed site and offshore applications. Weighing 5.5 lbs, makes it ideal for feed mounting.



KEY FEATURES

- Weight of 5.5 lbs
- From 8 W to 25W of Power
- Size of 8.9 x 4.7 x 3.3 in
- Optional dual LO (Switchable).
Covers both regular and ext. Ku
(Not available for lower Ku-Band)
- Built-in Telemetry for critical parameters such as: RF power detection, mute control, over temperature shutdown, summary alarm
- WEB interface, SNMP monitoring, RS 485, RS232, Ethernet and dry-contacts M&C Interface
- 1:1 switching logic built into the BUC eliminating expensive external controller (Optional)
- IP65 rated housing and Fan (weather proof construction)

COST EFFECTIVE SOLUTION FOR THE FUTURE

SALES@ALGA.CA | WWW.ALGA.CA | 1-514-694-8666



Technical Specifications

ELECTRICAL					
	8 W GaAs	12 W GaAs	16 W GaAs	25 W GaAs	25 W GaN
RF Output at P1 dB	39 dBm	41 dBm	42 dBm	44 dBm	N/A
RF Output at P Sat					44 dBm
RF Output at P Lin	36 dBm	38 dBm	39 dBm	41 dBm	41 dBm
Output Frequency Range	Lower: 12.75 – 13.25 GHz;		Standard: 14.00 - 14.50 GHz;		Extended: 13.75 - 14.50 GHz
Input Frequency Range	Lower: 950 - 1450 MHz;		Standard: 950 - 1450 MHz;		Extended: 950 - 1700 MHz
Local Oscillator Frequency	Lower: 11.80 GHz;		Standard: 13.05 GHz ;		Extended: 12.80 GHz
Gain Stability Over Temperature	± 2 dB nominal; ± 2.0 dB max				
Gain Variation at fixed temperature	± 2.0 dB over full band; ± 0.5 dB over 40 MHz				
Linear Gain	60 dB nominal				
Gain Control	20 dB Nominal In 0.5 dB Steps				
Output VSWR	1.50:1				
Intermodulation	-25 dBc, with 2 equal carriers at 3dB total power back off from rated P1dB				
10 MHz Reference	0 dBm ± 5.0 dB				
	@ 100 Hz	@ 1 KHz	@ 10 KHz	@ 100 KHz	@ 1 MHz
10 MHz Phase Noise Requirement	-130 dBc/Hz max	-140 dBc/Hz max	-150 dBc/Hz max	-155 dBc/Hz max	
Local Oscillator Phase Noise	-63 dBc/Hz max	-73 dBc/Hz max	-83 dBc/Hz max	-93 dBc/Hz max	-103 dBc/Hz max
Output Spurious	-55 dBc max.				
Input Impedance	50 Ohms				
Input VSWR	1.50:1				
Power consumption (at rated power)	85 W	95 W	120 W	190 W	150 W
Power requirement (DC only)	+18 to + 36 VDC or +36 to +72 VDC				
INTERFACE					
Output Interface	Waveguide, WR75G (Grooved)				
Input Interface	N-Type Female, 50 Ohms				
Connectors	DC: MS3102R14S-9P	M&C: MS3112E14-19P SNMP, Ethernet, RS-485, RS-232		Redundancy: 3112E14-15P (Optional)	
MECHANICAL					
Cooling	Forced Air				
Dimensions (L x W x H)	9.00 x 4.75 x 3.375 in (228 x 120 x 86 mm)				
Weight	5.5 lbs (2.5 kg)				
ENVIRONMENTAL					
	Temperature Range (ambient)		Humidity		Altitude
	-40°C to + 55°C (operating); -40°C to + 75°C (storage)		0 to 100% (condensing)		10,000 ft ASL

ORDERING INFORMATION To place an order, build your specific Ku-BAND BUC by specifying the following in your ordering number:

Ordering Number: ALTX – AAAABBY – 60 – 13 – 4CC – XXXX

AAAA: Band	BBY: RF Power Level	CC: DC Supply	XXXX:
1213 Lower Ku Band	39 (8 W GaAs)	24 (18 – 36 VDC)	1050 Standard M&C included
1314 Extended Ku Band	41 (12 W GaAs)	48 (36 – 72 VDC)	1051 M&C and Redundant
1414 Regular Ku Band	42 (16 W GaAs)		(optional)
	44 (25 W GaAs)		
	44G (25 W GaN)		

COST EFFECTIVE SOLUTION FOR THE FUTURE

SALES@ALGA.CA | WWW.ALGA.CA | 1-514-694-8666

