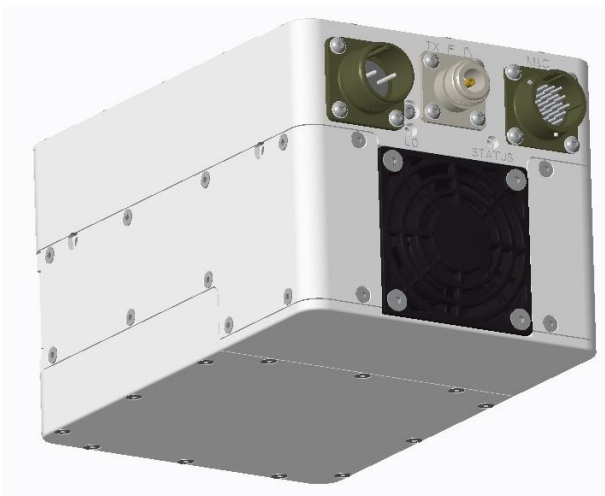


10-40 W Compact Ku-BAND BUC



ALGA LOW COST COMPACT KU-BAND BUC

The Alga low cost Compact Ku-band BUC is built for VSAT stabilized platforms and mobile stations, while also offering benefits for fixed site and offshore applications. Weighing less than 7 lbs, makes it ideal for feed mounting.



KEY FEATURES

- From 10 W to 40 W of available Power
- From 5 W to 25 W of Linear power
- Dual LO (Switchable).
Covers both regular and ext. Ku
- Built-in Telemetry for critical parameters such as: RF power detection, mute control, over temperature shutdown, summary alarm
- WEB interface, SNMP monitoring, RS 485, RS232, Ethernet and dry-contacts M&C Interface
- 1:1 switching logic built into the BUC eliminating expensive external controller (Optional)
- IP65 rated housing and Fan (weather proof construction)

COST EFFECTIVE SOLUTION FOR THE FUTURE

SALES@ALGA.CA | WWW.ALGA.CA | 1-514-694-8666

Compact Ku-BAND BUC Specifications

ELECTRICAL CHARACTERISTICS						
	10W	16 W	25 W	25 W GaN	30 W GaN Equ	40 W GaN
RF Output at P1 dB	40 dBm	42 dBm	44 dBm	N/A	N/A	N/A
RF Output at P Sat	40.5 dBm	42.5 dBm	44.5 dBm	44 dBm	Software Limited to 44 dBm	46 dBm
RF Output at P Lin	37 dBm	39 dBm	41 dBm	41 dBm	42 dBm	43 dBm
Output Frequency Range	Standard Band: 14.00 - 14.50 GHz;			Extended Band: 13.75 - 14.50 GHz		
Input Frequency Range	Standard Band: 950 - 1450 MHz;			Extended Band: 950 - 1700 MHz		
Local Oscillator Frequency	Standard Band: 13.05 GHz ;			Extended Band: 12.80 GHz		
Gain Stability Over Temperature	± 2 dB nominal; ± 2.0 dB max					
Gain Variation at fixed temperature	± 2.0 dB over full band;± 0.5 dB over 40 MHz					
Linear Gain	60 dB nominal					
Gain Control	20 dB Nominal In 0.5 dB Steps					
Output VSWR	1.50:1					
Intermodulation	-25 dBc, with 2 equal carriers at 3dB total power back off from rated P1dB					
10 MHz Reference	0 dBm ± 5.0 dB					
	@ 100 Hz	@ 1 KHz	@ 10 KHz	@ 100 KHz	@ 1 MHz	
10 MHz Phase Noise Requirement		-140 dBc/Hz max	-150 dBc/Hz max	-155 dBc/Hz max		
Local Oscillator Phase Noise	-63 dBc/Hz max	-73 dBc/Hz max	-83 dBc/Hz max	-93 dBc/Hz max	-103 dBc/Hz max	
Output Spurious	-55 dBc max.					
Input Impedance	50 Ohms					
Input VSWR	1.50:1					
Power consumption (at rated power)	85 W	120 W	190 W	150 W	150 W At P Lin	250 W
Power requirement	+18 to + 36 VDC Or +36 to +72 VDC	+18 to + 36 VDC Or +36 to +72 VDC	+18 to + 36 VDC Or +36 to +72 VDC	+18 to + 36 VDC Or +36 to +72 VDC	+36 to +72 VDC	+36 to +72 VDC
INTERFACE						
Output Interface	Waveguide, WR75G (Grooved)					
Input Interface	N-Type Female, 50 Ohms					
Connectors	DC: MS3102R14S-9P		M&C: MS3112E14-19P		Redundancy: 3112E14-15P (Optional)	
MECHANICAL						
Cooling	Forced Air					
Dimensions (L x W x H)	7.01 x 4.72 x 4.13 in (178 x 120 x 105 mm)					
Weight	7 lbs (3.1 kg)					
ENVIRONMENTAL						
	Temperature Range (ambient)		Humidity		Altitude	
	-40°C to + 55°C (operating); -40°C to + 75°C (storage)		0 to 100% (condensing)		10,000 ft ASL	

ORDERING INFORMATION To place an order, build your specific Ku-BAND BUC by specifying the following in your ordering number:

Ordering Number: ALTX – AAAABBY – 60 – 11 – 4CC – XXXX

AAAA: Band	BBY: RF Power Level	CC: DC Supply	XXXX: Options
1314 Extended Ku Band	40 (10 W GaAs)	24 (18 – 36 VDC)	1050 M&C
1414 Regular Ku Band	42 (16 W GaAs)	48 (36 – 72 VDC)	1051 M&C and Redundant Ready
	44 (25 W GaAs)		
	44G (25 W GaN)		
	45G (30 W GaN)		
	46G (40 W GaN)		
		“Only 48 DC Supply Option for 30W GaN Equ Unit and 40W GaN”	

COST EFFECTIVE SOLUTION FOR THE FUTURE

SALES@ALGA.CA | WWW.ALGA.CA | 1-514-694-8666

